

**Scott & Patricia Denham**

**From:** "Susie Marcum" <smarcum@cls.k12.ia.us>  
**To:** <Undisclosed-Recipient:;>  
**Sent:** Friday, August 27, 2010 2:32 PM  
**Attach:** header.htm  
**Subject:** The Warriors Weekly Current

# The Warriors Weekly

*"Live By The Spirit"*

*So I say, live by the Spirit, and you will not gratify the desires of the sinful nature.*  
*Galatian 5:16*

A Publication of Clarinda Lutheran School, 707 W. Scidmore, Clarinda, IA 51632 (712)542-3657

Website: [www.clarinda.heartland.net/cls/](http://www.clarinda.heartland.net/cls/)

Office e-mail: [smarcum@cls.k12.ia.us](mailto:smarcum@cls.k12.ia.us)

Volume 16

Number 2  
2010

August 27,

## Calendar of Events

### Monday, August 30 -

† Computer / TV Pick-ups

### Thursday, September 2 -

† Volleyball at Hamburg, 4:00 p.m.

### Monday, September 6 -

† No School, Labor Day

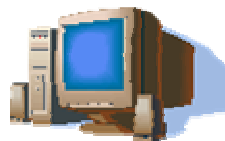
### Thursday, September 9 -

† Volleyball at Stanton, 3:30 p.m.



### Farm Fresh Eggs for Sale

We have farm fresh eggs for sale. \$1.50 for a dozen.  
 They are from the Bix Farm.  
 Stop by the office to purchase.



Bring your old computer monitors, printers, overhead projectors, VCR & DVD players, TV's and Microwaves to Clarinda Lutheran School for pick-up on Monday, August 30<sup>th</sup>.  
 Save on your landfill fees.

We have a company coming to pick up these items on Monday, August 30<sup>th</sup>- one day only

### Volunteers Needed

Clarinda Lutheran School is signing up volunteers for the following jobs:  
Head Librarian (3-5 hours a week to get started); Library Clerks (two hour shifts a.m. and p.m.); Hallway Buddies (teacher aide, one on one). Simple training before you get started.  
 If you like to paint, we have some

outside doors in need of painting.  
Contact Miss Sump at 542-3657

### **Clarinda Lutheran School Calendars**

We have brand new CLS calendars this year! They are available in the narthex at Saint John, Saint Paul and Immanuel. Grandparents, aunts/uncles, friends of CLS and anyone interested are welcome to have one free of charge.



### **Next week's Birthdays:**

8/29: Madison Nothwehr  
8/30: Taylor Cole  
8/31: Sophie Lyle

### **Math 7/8 Teacher Aide Position**

Please contact Miss Sump if you would like to apply. A.M. time frame.

### **Chapel**

Our offering for 1<sup>st</sup> Quarter is for the Clarinda Hospitality House. This program offers free housing for those coming to Clarinda to visit prisoners or Academy students.

### **Chapel T-Shirts**

Chapel T-Shirts have been ordered. Thanks for your prompt attention to this matter.

### **Student Handbook**

It is good with one week down to review sections that have stated to be noticeable to the faculty. Please check the length of shorts. ½ of the upper leg should be covered – we don't consider the hip area to be part of the upper leg. Shirts should have sleeves on them. No flip flops. Jeans should be neat, clean and in good repair. We hope church is an important aspect of your families' life. Homework should be done.

Please note how a parent can report an excused assignment.

### **Early Arrival**

Students on the early arrival sheet should report to the gym. You may enter the gym door (warm weather). During inclement weather, students should use the dumpster door. (door between kitchen and gym). The faculty has developed an AM program to get kids moving. 7:30 – 7:45 a.m. recess environment; 7:45 a.m. put equipment away; 7:50 a.m. walk or run laps in the gym; 8:00 a.m. dismissed to classrooms.

Early arrival must be approved by the Principal. Parents need to be at work by 8 a.m. is the main reason for permission to have an early arrival.

**KOHL'S**  
expect great things

**VOTE**

@ facebook.com/kohls

In celebration of Kohl's Cares 10<sup>th</sup> Anniversary, they are donating \$500,000 to 20 schools for a total of \$10 million. All you have to do is vote for your favorite schools. The top 20 schools with the most votes will win the contest. Voters must be at least 13 years of age. Each voters receives 20 votes and can use up to 5 votes per school.

The deadline is Friday, September 3<sup>rd</sup>.

Encourage your friends & family members to vote. **What would you like your school to do with half a million dollars?**

No tax bonds. No fundraising. No purchase necessary. Vote and make your suggestions at [facebook.com/kohls](http://facebook.com/kohls)

### **Collection Sheets**

There are collection sheets available in the office to help you keep track of your Box Tops for Education, Labels for Education & Fast Fixin' labels. See Mrs. Marcum.



### **CLASSROOM NEWS:**

-

#### **Grade 4/5 by Ashley McCoy:**

We are having a great first full week of school. We are learning about leaves, bugs and flowers in Science. In P.E., we are playing inner tube baseball. It is so fun!

-

-

#### **PTL Family Picnic**



Lilly & Heather McCormick



Morgan Rope



Tana Letson with Sophie, Kaden & Patrick Lyle



Jana Dow, Darah Gray & Jordyn Moser  
Alexis Schindler & Mrs. Hodges

### Clarinda Lutheran School Mission Statement

*“Compelled by God to TELL THE NEXT GENERATION..., Clarinda Lutheran School provides an education firmly based on Biblical truths to build Christian faith, Christian character and academic excellence.*”

No virus found in this incoming message.

Checked by AVG - [www.avg.com](http://www.avg.com)

Version: 9.0.851 / Virus Database: 271.1.1/3098 - Release Date: 08/27/10 13:34:00